

# LESNER INN

LET'S CELEBRATE

First of all, thank you for your interest in The Lesner Inn for your event venue. The Lesner Inn loves all celebrations, and we are so excited to be a part of yours. Whether it's a birthday, graduation, fundraising gala, holiday party, baby shower, or any other milestone, we've got you covered!

Planning an event is exciting, but can also be overwhelming... which is why we want to make sure that we can answer all of the questions you may have in order to help select your event venue. Please review our pricing & offerings listed in the following pages & let us know if you have any questions.

We look forward to hearing from you!

*The Lesner Inn*

# LESNER INN



“LESNER INN ISN'T JUST A STUNNING VENUE... THEIR EXPERT TEAM WERE THE BRAINS BEHIND AN EXPERIENCE THAT OUR GUESTS HAVE YET TO STOP TALKING ABOUT! THEY WENT ABOVE & BEYOND TO MAKE SURE THAT OUR PARTY OF 240 GUESTS WERE ACCOMMODATED & TREATED LIKE VIP!”

MARIA SOLIVEN





**"WE HAD THE BEST EXPERIENCE  
WITH LESNER INN, OUR  
WEDDING COULD NOT HAVE  
BEEN ANY MORE BEAUTIFUL AND  
WE FELT SO SUPPORTED BY  
THEIR WONDERFUL TEAM. THEY  
ARE HIGHLY KNOWLEDGEABLE  
ABOUT THE WEDDING INDUSTRY  
AND WERE ABLE TO HELP MAKE  
THE PROCESS OF PLANNING OUR  
RECEPTION SMOOTH AND FUN.  
YOU CAN'T BEAT THE STUNNING  
VIEW OF THE WATER!"**

HOLLY & JOHN MICHAEL

## GENERAL INFORMATION

---

The Lesner Inn is a catering venue & our pricing requires both a site fee along with a food & beverage minimum. The food & beverage minimum can be reached through our food & beverage packages.

### THE SITE FEE

The site fee covers the cost of the venue itself, separate from any additional costs such as catering, staffing or equipment rental. The site fee, along with all goods & services are subject to a 6% tax & 20% service charge. A detailed breakdown of what our site fee includes can be found on the next page.

### FOOD & BEVERAGE MINIMUMS

The Food & Beverage Minimum is the set amount you must spend on food & beverage for an event before service charge & tax. All food & beverage are subject to a 11.5% tax & 20% service charge. The Food & Beverage Minimum varies based on event space, day of the week, & time of day. The Lesner Inn curated a food & beverage package specifically for celebrations like yours.

Please review the options on page 6 & ask a sales manager how you can customize these packages.

---

THE FOOD & BEVERAGE MINIMUM VARIES  
BASED ON EVENT SPACE, DAY OF THE  
WEEK & TIME OF DAY.

---

# LESNER INN

## THE SITE FEE



A sales manager to assist in menu planning details, floor plan layouts, basic timelines & venue upgrades

3-hour celebration, with an option to extend for an additional fee

Chivari chairs in the Lesner Hall & X-Back chairs in the Waterside Deck

6-foot, 5-foot, & 4-foot round guest tables

House glassware, chinaware, flatware

Round guest tables, in addition to side tables & easels for signage, desserts, gifts, guest books, place cards etc.

House white linens

Three candle votives per table

Access to the selected venue space two-hours before the event for setup

Select special vendor discounts provided by The Lesner Inn's preferred vendors

On premise parking & a parking attendant to direct your guests

**3-hour event: \$21 per person**  
**\$750 per hour after 3-hours**

*Minimum site fees per space: Waterside Deck: \$750, Lesner Hall/Sunset Deck: \$1000, Entire Venue: \$1250*

# BABY SHOWER

## FOOD & BEVERAGE PACKAGES



*one*

*two*

*three*

\$51 per person

Brunch buffet

Mom-Mosa Bar

Refreshments of sodas, juices,  
water & coffee

\$81 per person

Everything in Package One, plus

Fresh assorted fruit platter

Mini/Split champagne bottles to  
gift your guests as a favor

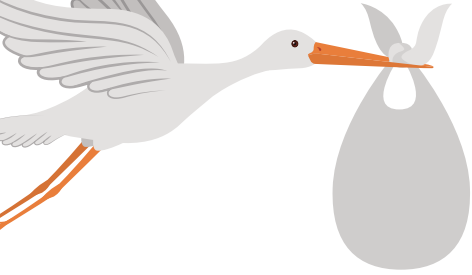
Your choice of gender-neutral  
dessert or a pink or blue themed  
dessert board

\$104 per person

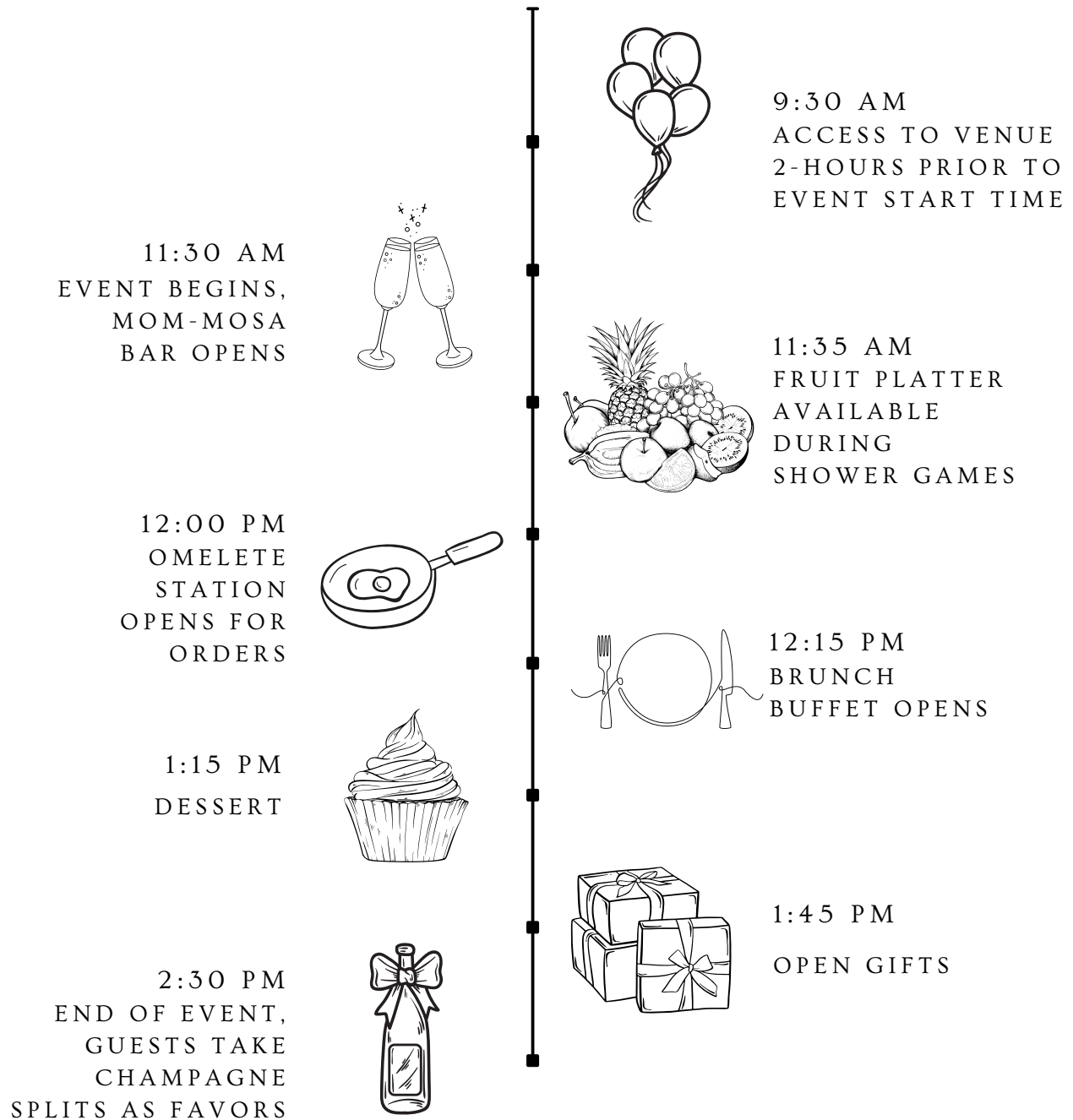
Everything in Package Two, plus

Option to substitute brunch buffet  
with your choice of a two-entrée  
buffet, heavy hors d'oeuvres  
buffet or hot stations

Open Bar of House Beer & Wine



# YOUR SAMPLE BABY SHOWER TIMELINE



## EVENT SPACE MINIMUMS

---

### THE ENTIRE VENUE

The Entire Venue social event rental has a site fee minimum of \$1250 for a 3-hour event. An additional hour of time will incur a fee of \$750 per hour. The Entire Venue weekend food & beverage minimums range from \$8000 to \$18,000. The Entire Venue rental grants use of all three event spaces - The Waterside Deck, The Lesner Hall & The Sunset Deck.

### THE LESNER HALL & SUNSET DECK

The Lesner Hall & Sunset Deck rental has a site fee minimum \$1000 for a 3-hour event. An additional hour of time will incur a fee of \$750 per hour. The Lesner Hall & Sunset Deck weekend food & beverage minimums range from \$5000 to \$12,000. The Sunset Deck has a maximum capacity of a 200-person ceremony. The Lesner Hall has a maximum capacity of a 200-person seated dinner, 150-person buffet-style dinner or 300-person cocktail style event.

### THE WATERSIDE DECK

The Waterside Deck rental has a site fee minimum of \$750 for a 3-hour event. The Waterside Deck weekend food & beverage minimums range from \$3000 to \$6000. The Waterside Deck has a max capacity of an 80-person seated dinner, or 150-person cocktail style event.

---

SCHEDULE YOUR TOUR WITH OUR SALES  
TEAM TODAY & REQUEST A QUOTE TO  
HOST YOUR WEDDING HERE!

---



# LESNER INN

---

## CONTACT

---

SCAN THE QR CODE TO SEE OUR MENUS,  
VISIT OUR WEBSITE, & FOLLOW OUR  
SOCIAL MEDIA ACCOUNTS



*Our office hours are determined by our event schedule.  
Please call or email us to schedule a tour so that we can  
coordinate a time that works best for us both!*

